

Kodak Ngenuity
Series Scanners



The **smartest**
way to make
paper **history.**

The smartest way to scan the widest range of documents

Kodak Ngenuity Series Scanners—the next scanning innovation in Kodak’s document imaging solutions’ portfolio—deliver an unprecedented combination of intelligent paper handling, 40% larger feeder capacity than other scanners in their class and razor-sharp image quality, with the added benefits of a user-friendly interface, easy maintenance and a low cost of consumables. Users across industries can now convert a wider range of documents into high-quality digital images, quickly and more efficiently than ever before. It’s an ingenious way to make, manage, and move images and information.



Advanced document handling = improved workflow efficiency

Scan a wider range of documents

Everything from rice paper to plastic cards, to stuffed envelopes and cardstock, to photos and long EKG strips is fair game for the **Ngenuity** Scanners, which scan the widest range of documents of any scanner in their class*.

With an unlimited daily duty cycle, the **Ngenuity** Scanners breeze through documents up to 12.5 inches wide and 200 meters long, at speeds that are among the best in their class:

- 150 pages per minute in black-and-white, color and grayscale at 200 dpi

Further, you don’t have to sacrifice long-term efficiency for short-term speed. Some components on the scanner have been tested to last for more than 50 million scans.

Straight pass-through paper path and document modes add versatility

While most documents can make their way easily through the scanner’s rotary path, the **Ngenuity** Scanners include an alternative “straight pass through” paper path for exception documents (such as stuffed envelopes and laminated cards) that cannot make the turn on the rotary path.

What’s more, special document scanning modes auto-adjust the **Ngenuity** Scanners’ feeding and transport scanner settings for very long, folded or fragile documents.

Auto-adjustable feeder tray holds 40% more documents

The **Ngenuity** Scanners’ feeder tray holds 700 documents—40% more than other scanners in their class.

The tray also rises and falls—literally—in perfect sync with your batch size, thanks to Variable Feeder Tray Capacity Control, which remembers your most recent batch size. And since the feeder does not restrict you to manufacturer-set batch size limitations, you can scan almost any size batch you want, faster than ever before.

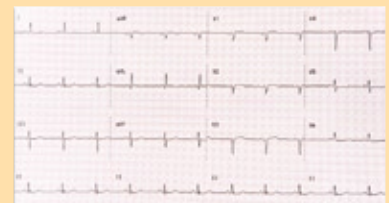
The feeder tray’s capacity and innovative technology save you valuable time when loading and switching batches.

*Comparative statements are based on published specifications of certain other mid- to high-volume production scanners at the time of printing.

The Kodak Ngenuity Scanners’ innovative design packs in smart features that make a big impact in helping you spend less time sorting paper, adjusting scanner settings and worrying about image quality, and more time streamlining your document workflow and boosting your bottom line.



Fragile and thin documents
Rice Paper • Airbills • NCR Forms



Very long documents
EKG Strips • Oil Well Logs

State-of-the-art technologies = enhanced image quality

Next-generation cameras deliver razor-sharp images

Armed with top-of-the-line SharpShooter Trilinear CCD cameras, the **Kodak Ngenuity** Scanners deliver 600 dpi optical capture and output.

This advanced camera technology delivers higher OCR, ICR and barcode recognition rates and more reliable forms processing.

LED illumination: longer lasting, no warm-up time

LED lights require no warm-up time, meaning the scanner can deliver optimal image quality from the minute you turn it on.

The LED lights are designed to last the life of the scanner with normal use and provide a more stable level of light than traditional lamps. This translates into more consistent image quality and less time spent calibrating the cameras. In fact, the **Ngenuity** Scanners' cameras only need to be calibrated one to two times per year.

Onboard VirtualReScan Professional: image enhancement at no cost to speed

Onboard **VRS** Professional Application is integrated into the hardware of the scanner. This way, you can enjoy all the image enhancement and error resolution functionality of the **VRS** application without sacrificing speed.

Advanced color management and more precise image cropping are only two of the many features at your fingertips with Onboard **VirtualReScan** Professional Application on the **Ngenuity** Scanner.

Added-value functionality = preferred user experience

Easy to install, use and maintain

The **Ngenuity** Scanners feature a USB 2.0 port and cable to make it easier for you to connect the scanner to the PC. They have a SCSI port as well.

You can access much of the scanner functionality directly through the PC. For example, the **Ngenuity** Operator Utility (NOU) allows you to track the total number of scans and monitor maintenance schedules.

Further, our user-friendly interface with front panel functionality provides easy access to frequently used features and includes two user-customizable function buttons.

Ngenuity Scanners are also easy to clean and maintain. The scanners' only consumables—the rollers and tires—are easy to replace; and users can install optional accessories, like the imprinter, easily.

Enhanced ultrasonic multi-feed detect and ignore

Three independently controlled, ultrasonic sensors raised the bar on multi-feed detection.

What's more, the "Multi-feed Ignore" setting on the **Ngenuity** Scanners now allows you to accept scanned images and continue scanning or alert the scanner in advance to accept an intended multi-feed.

The "Ignore by Size" option lets you proactively scan items—such as taped receipts and sticky notes—that the scanner might otherwise identify as a multi-feed and stop.

Value, durability and performance

The **Ngenuity** Scanners' steel paper path and durable parts (including protectively sealed CCD cameras, long-lasting LED lights, and rollers that last for 600,000 scans) ensure that the scanners are able to withstand the many challenges of any hardworking production environment. This means a low, overall cost of scanner maintenance and ownership.

What are you waiting for? Ask to see a demonstration of the **Ngenuity** Scanner today.



Exception documents

Receipts • Folded Documents
• Photographs



Thick and stiff documents

Stuffed Envelopes • Plastic Cards
• Cardstock



Legal and A4 size documents

Contracts • Forms • Invoices

Kodak Ngenuity Series Scanners

Model		9150	9125	9090
Scanning Speed	Letter Size Landscape at 200 dpi	150 ppm/300 ipm	125 ppm/250 ipm	90 ppm/180 ipm
	Black-and-White, Color, Grayscale Simplex/Duplex Portrait at 200 dpi	120 ppm/240 ipm	100 ppm/200 ipm	70 ppm/140 ipm
Daily Duty Cycle		Unlimited		
Roller Life (bond)		600,000 scans		
Resolution		Output: 600 dpi, Optical: 600 dpi		
Camera Technology		SharpShooter Trilinear 7.6k CCD		
Lighting Technology		White LEDs—instant warm-up; designed to last the life of the scanner with normal use		
Image Enhancement		Onboard VRS Professional		
Interface		USB 2.0 (cable included); SCSI III		
Supported Drivers (Included)		ImageControls, ISIS and TWAIN through VRS Professional; direct ISIS, TWAIN		
Multi-feed Detection		Ultrasonic Multi-feed featuring: Three sensors, Preemptive Ignore, Ignore As Is, Ignore by Size		
Imprinting		Optional user-installable pre- and/or post-scan imprinter, time and date stamping, 72 characters		
Document Size		43 x 64 mm (1.7 x 2.5 in.) to 318 x 1016 mm (12.5 x 40 in.)		
Document Size—Long Document Mode		Up to 200 m (219 yards)		
Maximum Image Width		311 mm (12.25 in.)		
Paper Thickness—Rotary		0.038–0.89 mm (.0015–.035 in.)		
Paper Thickness—Straight-Through Paper Path		0.038–1.78 mm (.0015–.070 in.)		
Paper Weight		30–1,200 gsm (7 to 320 lb. bond)		
Feeder Capacity (75 gsm paper/20 lb. bond)		700 documents—Variable Feeder Tray Capacity Control		
Scanner Size (HxWxD)**		49.5 x 52.1 x 76.2 cm (19.5 x 20.5 x 30 in.)		
Scanner Weight		50.8 kg (112 lb.)		
Power Requirement		AC 100–120 V; 220–240 V; 50/60 Hz		
Power Consumption	Maximum (Scanning)	175 W		
	Minimum (Standby)	60 W		
	Sleep/Energy Star	6.7 W		
Environment	Temperature	10°C to 38°C (50°F to 100°F)		
	Relative Humidity	10% to 80%		
Additional Features		Straight Pass Through Paper Path, Special Documents Mode, Advanced Color Functionality		
Additional Contents		USB Cable, Installation Resource CD with Kodak Ngenuity Operator Utility (NOU) and the VRS Professional Application, Power Cord, Starter Cleaning Kit, Camera Calibration Kit		
Additional Options		User-installable Pre- and/or Post-scan Imprinter with Time and Date Stamping, Roller Kit, Cleaning Kit, Power Conditioner		

**Straight paper path door closed

To learn more:

Visit www.kodak.com/go/docimaging

Printed using Kodak Technologies.

Kodak Ngenuity Scanners
1-800-SCAN-494

Eastman Kodak Company
343 State Street
Rochester, NY 14650 USA
1-800-944-6171

Kodak Canada, Inc.
Toronto, Ontario
M9R 0A1
1-800-465-6325



It's time for you **AND** Kodak

©Kodak, 2009. Kodak, Ngenuity and SharpShooter are trademarks of Kodak.

Specifications are subject to change without notice.

A-5815 CAT No. 830 9452 Printed in USA 01/10