



# fi-6010N

## Color Duplex Network Scanner

Ease of use, simple device control and a highly secure network scanner to assist with improving business processes

- ▶ Useful business functions including Scan to E-mail, Scan to Folder, Scan to Network Fax, Scan to FTP and Scan to Print
- ▶ Advanced imaging features include improved image quality, page rotation to proper orientation as well as other user-friendly functions
- ▶ "Job function" enables administrators to create predefined sequences to perform and lock-down profiles
- ▶ Lower total cost of ownership with simplified device management via the Central Administration Console
- ▶ Enhance regulatory compliance and improve data security using strengthened data transmission protocols
- ▶ Custom application development available in the optional Software Developer's Kit (SDK)
- ▶ Enhance productivity with Fujitsu service and support



**FUJITSU**

THE POSSIBILITIES ARE INFINITE

# fi-6010N iScanner

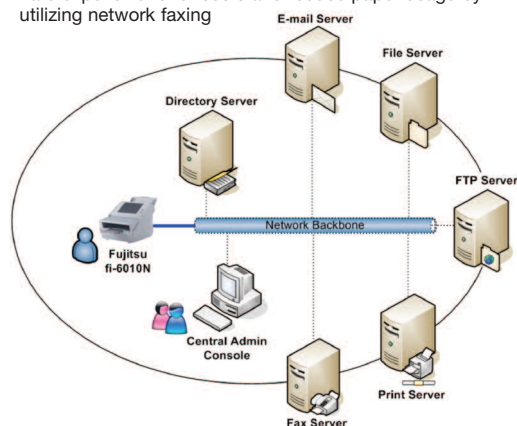
## Color Duplex Network Scanner

### Ease of use

- Office linking functionality includes Scan to E-mail, Scan to Folder, Scan to Network Fax, Scan to FTP and Scan to Print
- Advanced imaging functions performed automatically: Rotation, Blank Page Deletion, Color Detection, Deskew, Page Size Detection
- "Job button" functionality allows buttons to be programmed with predetermined scan settings, functionality to be performed and destinations to send images
- Large 8.4" XGA touch screen enables users to view scanned images with full US 101 keyboard

### Business and work process uses

- Admissions: Plastic card scanning through the document feeder enables one device to capture paper and other materials such as hard plastic identification or insurance cards
- Transportation: Excellent paper handling, automatic image quality enhancement and small footprint is ideal for shipping or receiving areas
- Banking/Finance: Strong data transmission security protocols ensures proof of identity (LDAPS) as well as device management (HTTPS) and transport (FTPS)
- Cost reduction: Decrease long distance charges, eliminate expensive toner costs and reduce paper usage by utilizing network faxing



### Simplified device management

- Control all devices on a LAN or WAN via one administration console
- Push updates to remote scanners to keep devices updated
- Track consumable counts to maintain optimal performance

### Compliance and regulation

- Assist compliance with highly secure transmission protocols to validate authentication and manage devices
- Reduce risks associated with unmanaged communication within organizations
- Energy Star to conserve energy and RoHS to reduce hazardous electronic parts

### Development and customization (SDK option)

- Software Developer Kit (SDK) option available to provide third-party connectivity
- Create customized look and feel of screens displayed
- Enable additional functionality to connect to Enterprise Content Management repositories, Line of Business applications or other applications

### Fujitsu Computer Products of America, Inc.

<http://us.fujitsu.com/fcpa>

1255 East Arques Avenue Sunnyvale, CA 94085-4701. (800) 626-4686 (408) 746-7000 info@fcpa.fujitsu.com

©2008 Fujitsu Computer Products of America, Inc. All rights reserved. Fujitsu and the Fujitsu logo are registered trademarks and The Possibilities are Infinite is a trademark of Fujitsu Limited. As an ENERGY STAR® partner, PFI Limited, a Fujitsu company, has determined that this product meets the ENERGY STAR® guidelines for energy efficiency. ENERGY STAR® is a registered trademark of the United States. Windows is a registered trademark of Microsoft Corporation in the United States and other countries. ABBYY FineReader is either a registered trademark or trademarks of ABBYY Software Ltd. All other trademarks are the property of their respective owners.

All statements herein are valid only in the U.S. for U.S. residents, are based on normal operating conditions, are provided for informational purposes only, and are not intended to create any implied warranty of merchantability or fitness for a particular purpose. Fujitsu Computer Products of America, Inc. reserves the right to modify at any time without prior notice these statements, our products, their performance specifications, availability, price and warranty, post-warranty and service programs.

### Technical Specifications

MODEL		fi-6010N iScanner
<b>Functional Specifications</b>		
Technology		Dual Color Charge coupled device (CCD) image sensors
Resolution		150, 200, 300, 600 dpi
Color		24-bit single pass color, auto color detection
Scanning speed	Color	Simplex: 25ppm (200dpi), Duplex: 50ipm (200dpi)
	Monochrome	
Scanning mode		Color, monochrome, grayscale, auto color detection
Image adjustments		Brightness, contrast, dropout color, sharpness background removal
Document feeding mode		Automatic document feeder (ADF)
ADF capacity		50 Sheets (letter/A4, 20 lb.)
Document size	ADF minimum	(A8) (2.1 in. x 2.9 in.)
	ADF maximum	(Legal) (8.5 in x 14 in)
Network protocols		TCP/IP DHCP, SMTP, SMB, LDAP, NTP, FTP and HTTP
Network server		Windows 2000, 2003 or 2008 Server required
Output methods		TIFF, MTIFF, JPEG, PDF, searchable PDF's (English)
Interface		One network connection RJ45 10/100 base T
Software driver support		All software loaded on system (embedded)
<b>Physical Specifications</b>		
Power requirements		100 – 240 VAC, 50/60 Hz
Power consumption		88 W or less, Energy saving mode: 10 W or less
Operating environment	Temperature	42° to 95° F (5° to 35° C)
	Relative humidity	20% to 80% (non-condensing)
Dimensions (WxDxH)		12.4 in. (W) x 16.3 in. (D) x 11.1 in. (H)
Weight		28.7 lbs / 13 KG
Environmental compatibility		RoHS
Automatic image processing		Auto deskew, auto orientation, auto page size detection and blank page detection, color detection
Security		LDAP, LDAPS, FTPS, HTTPS
Touch panel	Screen size	8.4 in. XGA (1024 x 768 pixel) TFT color monitor
	Type	Analog resistive touch display
Keyboard		US 101 keyboard
Limited Warranty		90-day Limited Warranty. Advance Exchange, Basic, and ScanCare programs also available; Restrictions apply. For full details, visit <a href="http://www.ImagingService.com">www.ImagingService.com</a> or call (800) 626-4686.
Service options		<b>Post-Warranty</b> — Advance Exchange Plus, Basic Plus, and ScanCare™ Plus; restrictions apply. <b>Consumables</b> — ScanAid™ kits For full details, visit <a href="http://www.ImagingService.com">www.ImagingService.com</a> or call (800) 626-4686.
<b>Inbox Contents</b>		Network cable and power adapter
<b>Functionality</b>		Scan to folder/network, fax/print/ftp and email, Job buttons, Central administration console
<b>Features</b>		Ultrasonic double feed detection, hard and embossed card scanning capability, long document scanning and searchable and password protected PDF
Part Number	fi-6010N	PA03544-B105
	fi-6010N SDK	CG01000-529401
	Development Bundle	
<b>SDK Support</b>		Net 3.5 framework



### About Fujitsu Computer Products of America, Inc.

Fujitsu Computer Products of America, Inc. is a subsidiary of Fujitsu Limited, a leading provider of customer-focused IT and communications solutions for the global marketplace. FCPA provides innovative solutions for the U.S. marketplace. Current product and service offerings include high performance hard disk drives, Magneto-Optical drives, scanners and scanner maintenance, palm vein recognition technology, 10Gb Ethernet switches and degaussers.



THE POSSIBILITIES ARE INFINITE